
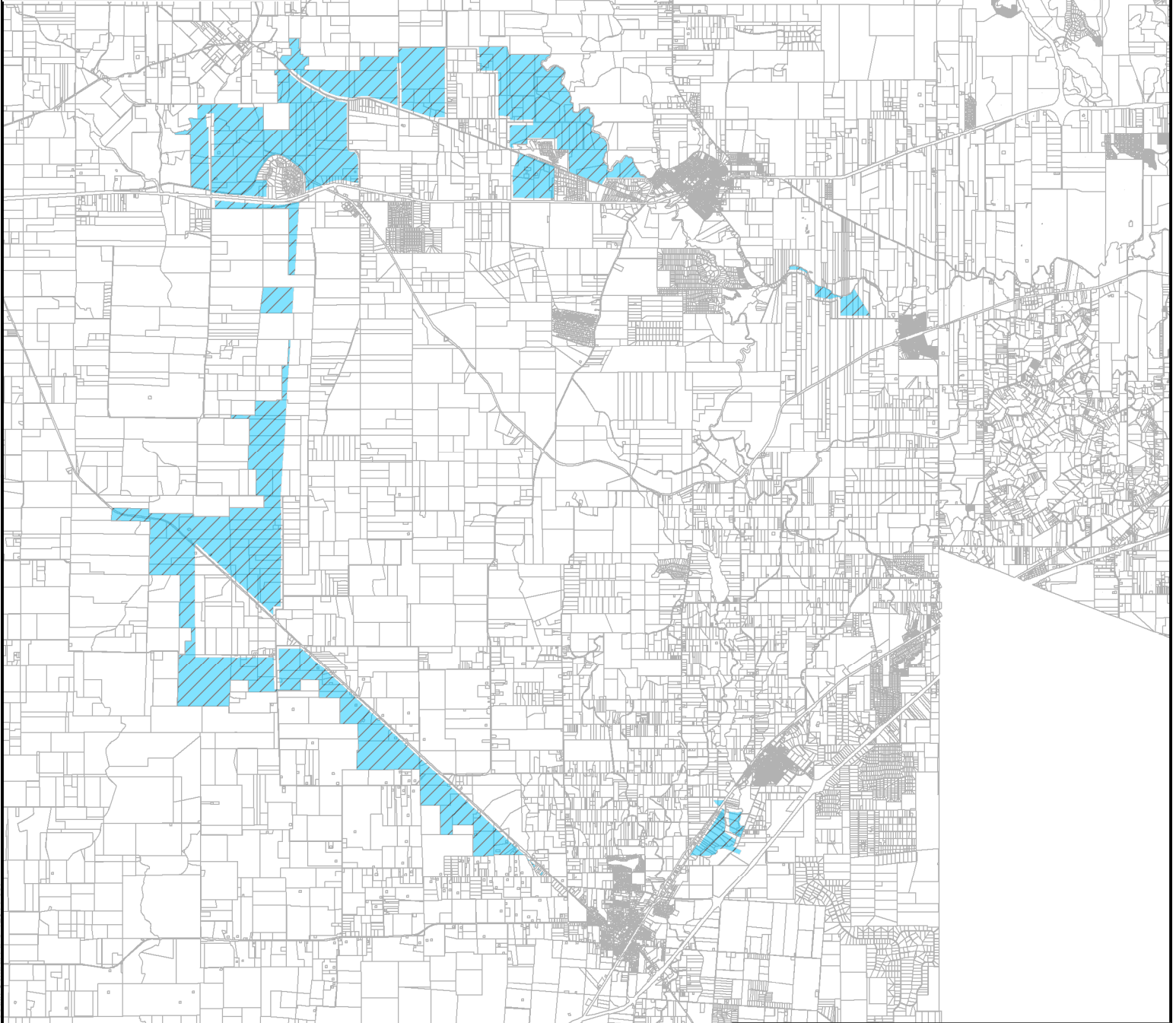



 PROPOSED EMCSUD CCN AMENDMENT
 PARCELS



Coordinate System: NAD 1983 StatePlane Texas South Central FIPS 4204 Feet



	GENERAL LOCATION MAP	
	PROJECT NAME: EMCSUD	
	PROJECT NO.: 03347	
DRAWN BY: maria.aguilar		
CHECKED BY: Daryl.Spillmann		
RESPEC • 1105 LORENZO STREET • CASTROVILLE, TEXAS 78009		
TBPE FIRM NO. F-17502 • WWW.RESPEC.COM		
 1 IN. = 15,000 FT.		 E02